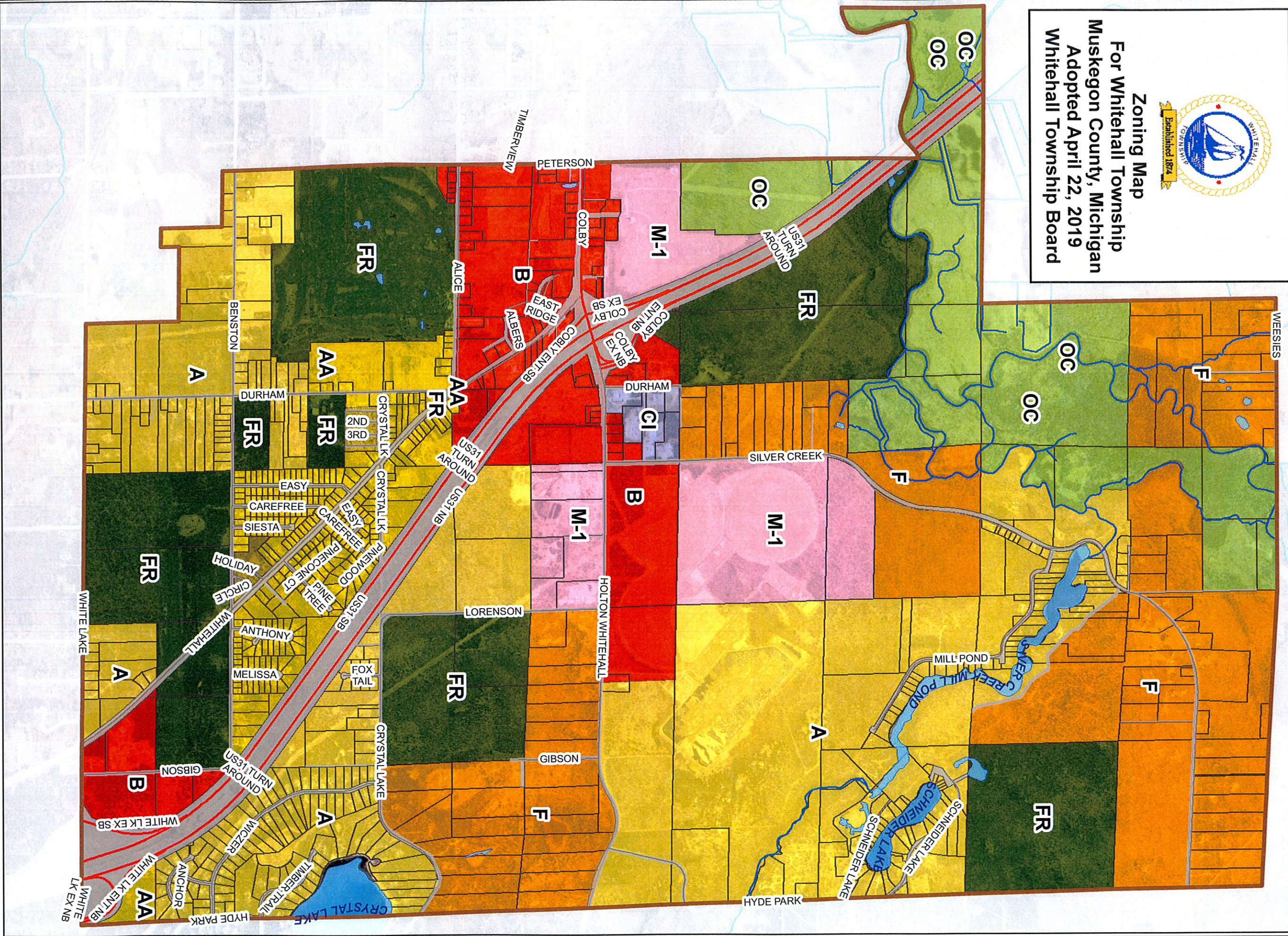




Zoning Map
For Whitehall Township
Muskegon County, Michigan
Adopted April 22, 2019
Whitehall Township Board

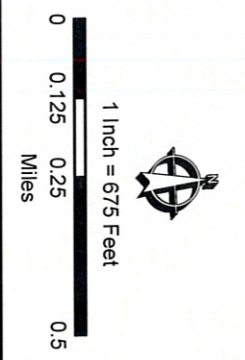


Zoning Code and Description

 A: LOW-DENSITY RESIDENTIAL	 CI: COMMERCIAL / INDUSTRIAL
 AA: HIGH-DENSITY RESIDENTIAL	 F: SMALL FARM
 AM: MOBILE HOME RESIDENTIAL	 FR: FORESTRY - REC
 B: COMMERCIAL	 M-1: LIMITED INDUSTRIAL
	 OC: OPEN SPACE

Zoning Classes and Map Features

 WHITEHALL TOWNSHIP	 ROAD CLASS
 PARCEL	 STREETS
 RIVERS AND STREAMS	 HIGHWAYS
 LAKES	



MUSKEGON COUNTY GIS

Mapping by Muskegon County GIS
 141 E. Apple Avenue, Muskegon, MI 49442
 www.muskegoncountygis.org
 Map Date: Muskegon County GIS
 Zoning Information: Whitehall Township Planning
 Projection: State Plane NAD 1983 Michigan
 South Zone, International Feet
 Map Version Date: 5/13/2019