

The Resource Recovery Center exists to improve the public health of Muskegon County citizens by receiving polluted wastewater, cleaning it up, and returning it to the environment for reuse and enjoyment. We recognize the weight of our responsibility as stewards both of the environment and of our system infrastructure which enables us to do our job. Our goal is to offer our service to the people of Muskegon County at the best possible rate without compromising our stewardships.

~David Johnson, Director

FINANCIAL REPORT

Christine Morris / Administrative Analyst

NOVEMBER FINANCIAL REPORT

The total operating expenses for the first two months of the 2026 fiscal year were \$1,925,952, or 12% of the FY2026 budget. Total revenues for the same period were \$2,914,240, or 14% of the budget.

FARM REPORT

Mike Clover / Farm Manager

2025 GROWING SEASON

Winter hit us with full force around Thanksgiving, and it seems that all we've been doing since then is plowing snow. I've been staying busy preparing our annual farm report for EGLE as required in our NPDES Permit. I've compiled and entered about 95% of the data needed to complete it. The rest can't be completed until after the start of the new year.

I'm holding off selling any grain at this time. Historically, in the month of February there's been some excitement in the grain markets, and I'm hoping that we can capitalize on it then.

For a preview of the coming year, please see our 2026 Crop Plan on page 5.

INFRASTRUCTURE MAINTENANCE AND IMPROVEMENT PROJECTS

Doug Noyes / RRC Engineer & Project Manager

SOUTHEAST REGIONAL FORCE MAIN

Contract 5: West Randall Lift Station | Grand River Construction

This month Grand River Construction finished installing the new 250 HP pumps and motors at West Randall Lift Station. They've also very nearly wrapped the installation of the process piping, the plumbing, the mechanical, and the electrical, with the exception of the delayed MCC (Motor Control

Center). Eaton Cutler-Hammer keeps deferring the ship date of the MCC, thus threatening our hope of having the station functional by the end of February.

RRC ADMINISTRATION BUILDING RENNOVATION

This month those who were exiled from the RRC Administration Building during the construction were able to move back in to their offices. Punch list items remain to be done, but that doesn't change this simple truth: There's no place like home!

STATISTICAL COMPARISONS

Amelia Amstutz / Operations Supervisor

FLOWS AND LAGOON LEVELS

The average daily piped wastewater flow (Fig. 1) received at the MCRRC in November was 10.05 MGD, which is a 1.9% increase from last November.

Hauled waste volume (Fig. 2) for November was 6.6 MG, which is a 23% decrease from last November. It is in fact the lowest hauled waste volume we've seen since October, 2022! Of the 6.6 MG in November, 1.1 MG was grease waste. This is a small percentage of our combined hauled and piped flow, but by my calculations I estimate that it contributed to 45% of our aeration demand in November.

The Storage Lagoon elevation (Fig. 3) in November was measured for both the east and west sides since they were isolated from one another and thus at different levels. On November 24 the west side elevation was 681.27 ft. while the east side elevation was 682.44 ft. If equalized, the total lagoon elevation would have been 682.0 ft, which is equivalent to 558 MG, which is 67% less volume compared to last year at about the same time.

Figure 1

2023 - 2025 Total Piped Wastewater Monthly Flow

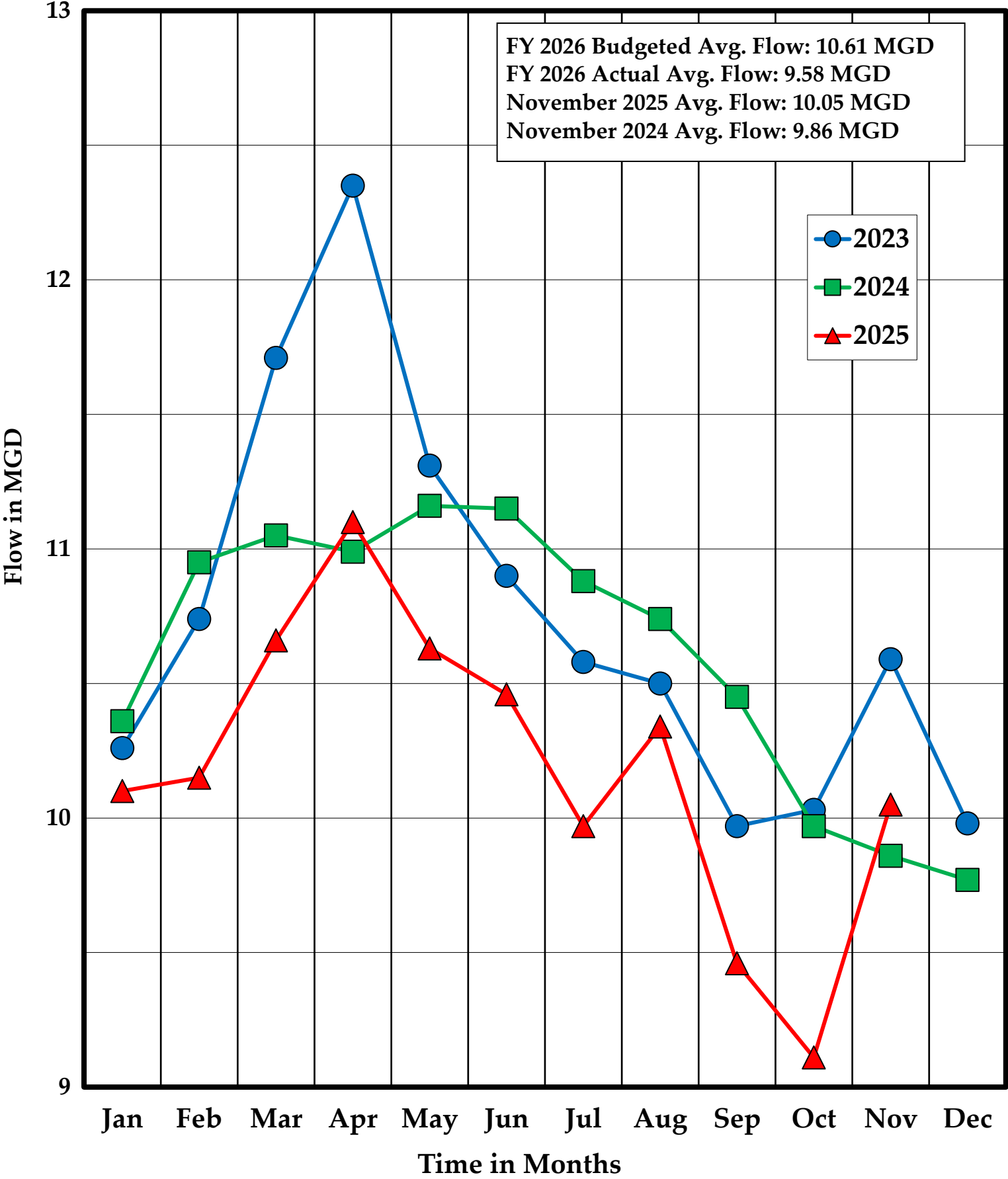


Figure 2

2023 - 2025 Hauled Waste Monthly Volume

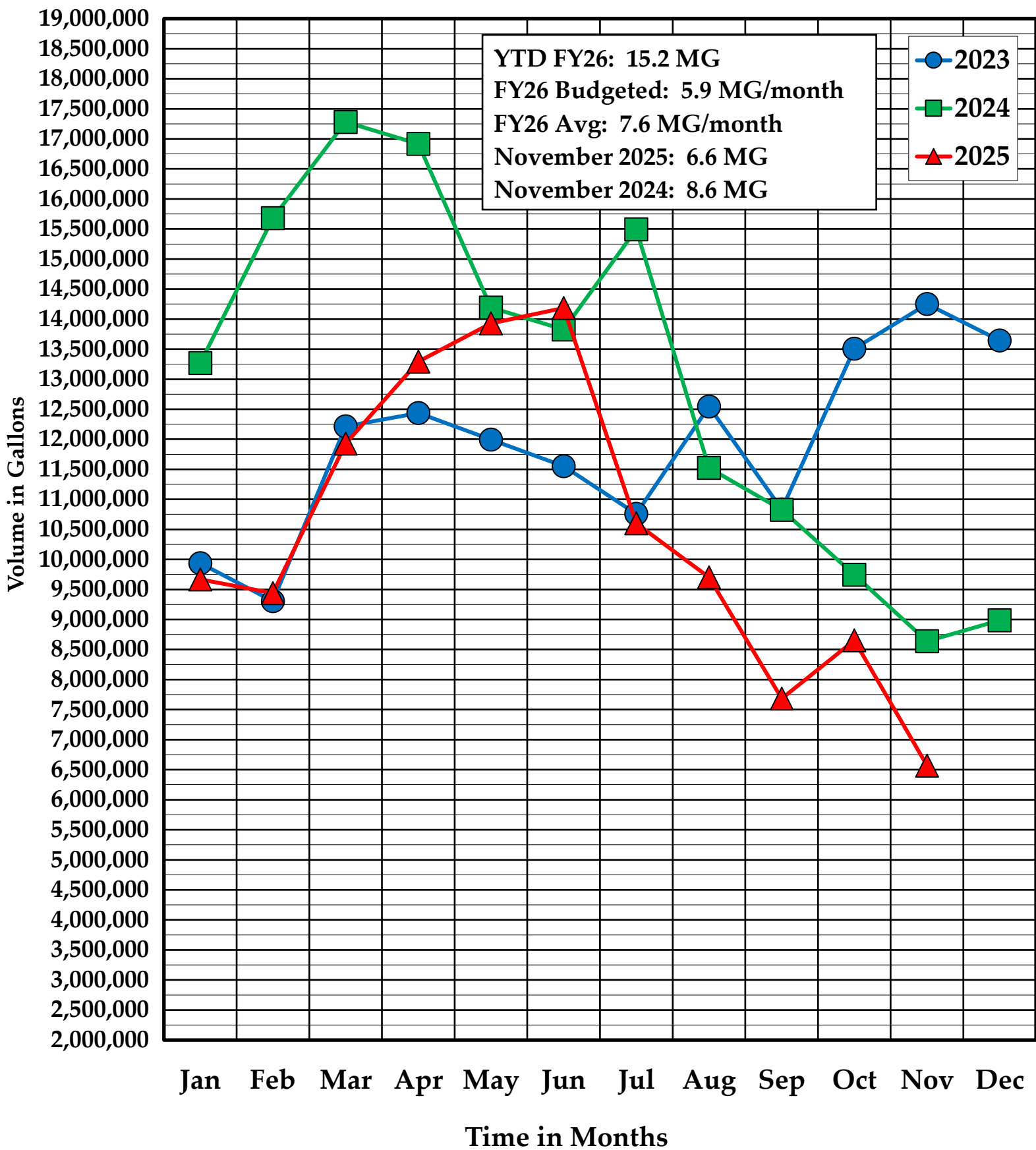
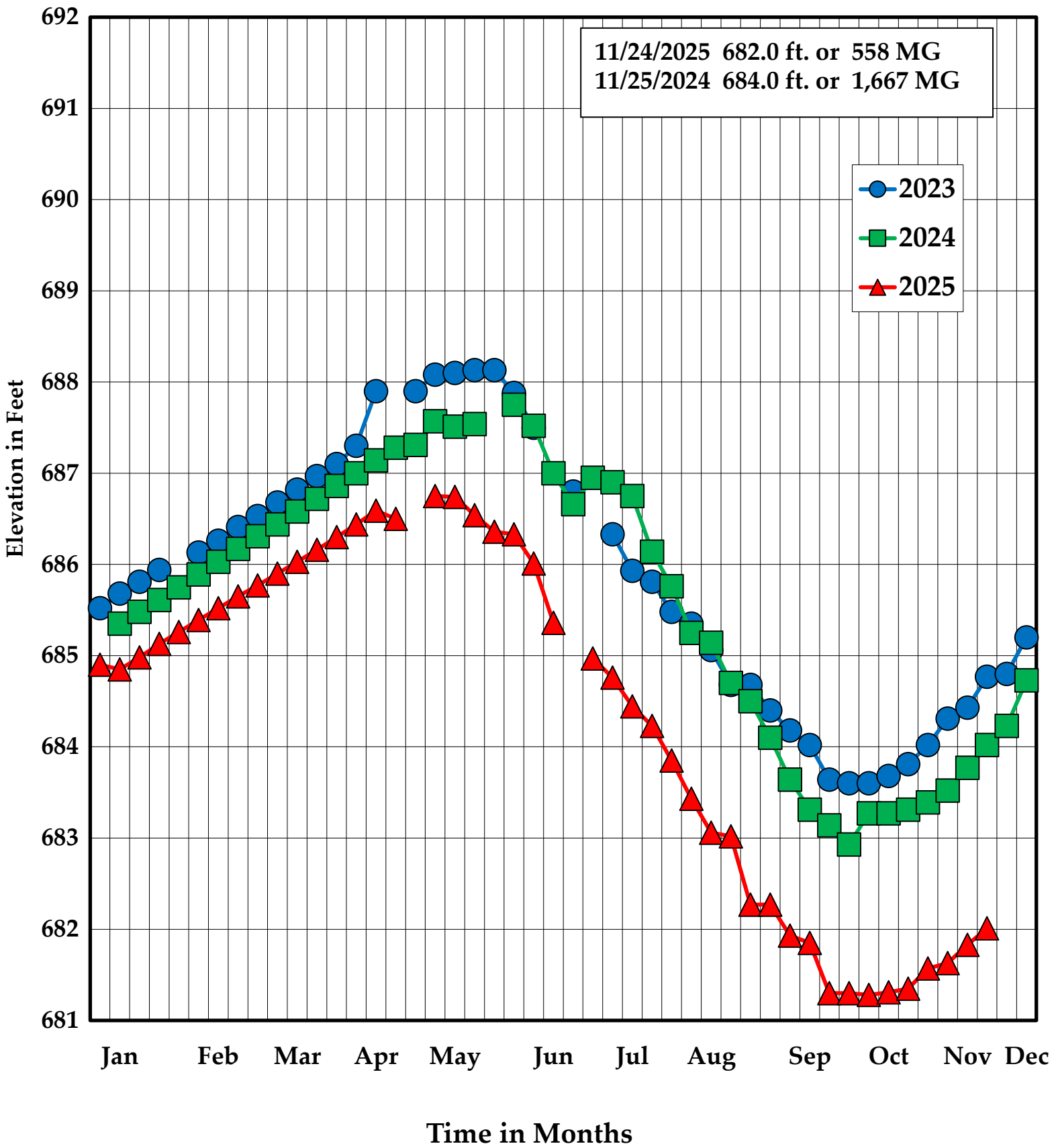


Figure 3

2023 - 2025 Metro Lagoon Elevation



Muskegon County Resource Recovery Center Farm
2026 Crop Plan

